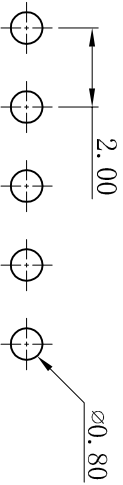
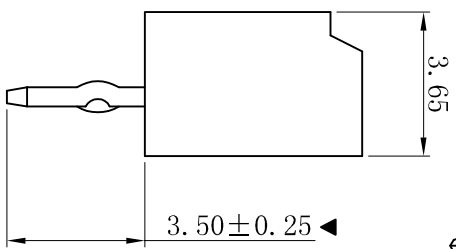
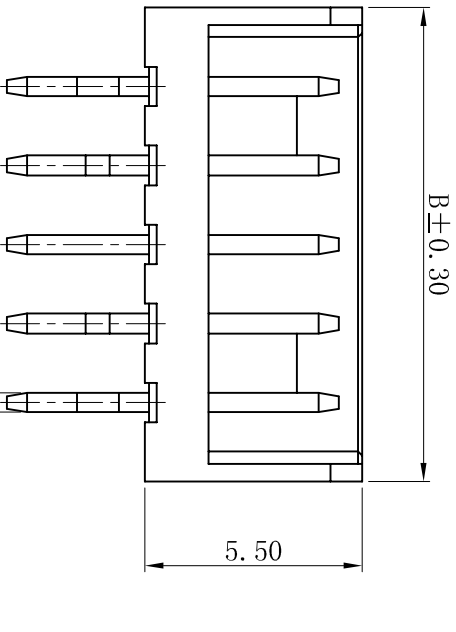
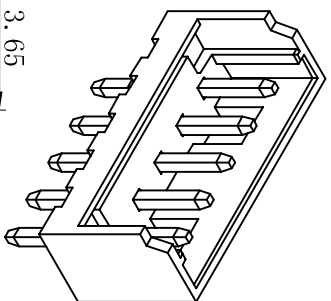
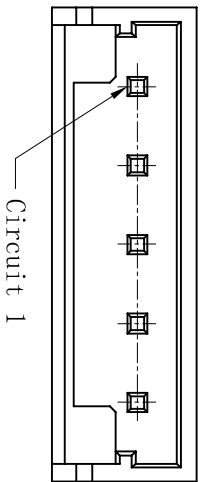


RoHS



P. C. B LAYOUT

- SPECIFICATIONS
- Voltage rating: 100V AC, DC
 - Current rating: 2A, AC, DC
 - Withstanding Voltage: 800V AC/minute
 - Insulation resistance: 1000MΩ min
 - Temperature range: -25° C~+85° C
 - Contact resistance: 10mΩ max
- WAFER
- Part No. : W2014V-NP
 - Poles : 02-15P
 - Housing Material: PA66 UL94V-0
 - Pin Material: Brass
 - Contact Area Plating: Tin-Plated
 - The Dimension Marked "▼" Must Be Recorded

Poles	Dimensions (mm)	
	A	B
02	2.00	6.00
03	4.00	8.00
04	6.00	10.00
05	8.00	12.00
06	10.00	14.00
07	12.00	16.00
08	14.00	18.00
09	16.00	20.00
10	18.00	22.00
11	20.00	24.00
12	22.00	26.00
13	24.00	28.00
14	26.00	30.00
15	28.00	32.00

D	更新图面	2019-06-03	陈雄军	一般公差 GENERAL TOLERANCE: 0±0.30 .0±0.25 .00±0.20 .000±0.05 ANGLE: ±1°	绘图/DR 审核/CHECK 批准/APPRO	陈雄军 陈雄军 胡进	2013-12-27 2011-05-24 2019-06-03	日期/DATE	承认 APPRO.
C	修订版本	2015-11-04	陈雄军						
B	变更图宽格式内容	2013-12-27	陈雄军						
A	新版本	2011-05-24	陈雄军						
H	版次 REV.	1							

<p>XYDZ® 东莞市祥运连接器有限公司 Dongguan Xiangyun Connector s CO.,Ltd</p>		投影法 Projection	品名 (PART NAME)	Mollex 2.00mm 53253 180° Wafer Connector Series
单位/Unit	MM	比例/Scale	1:1	料号 (PART NO)
大小/Size	A4	页码/SHEET	1/1	W2014V-NP
版本/Rev	D			状态码 C