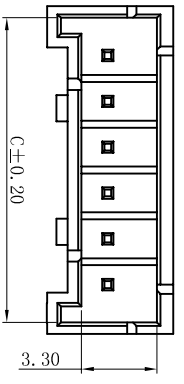
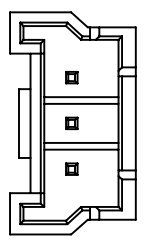


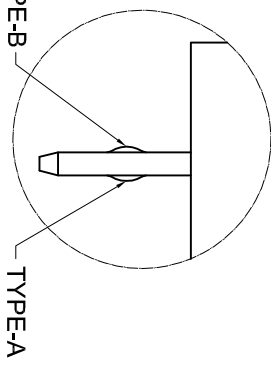
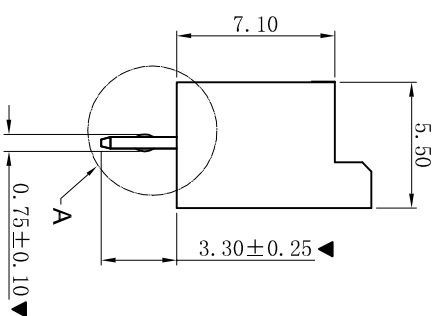
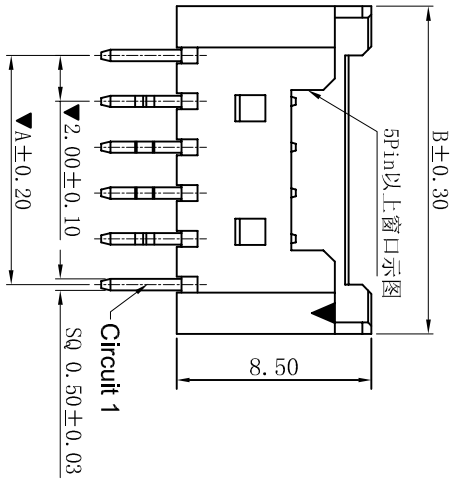
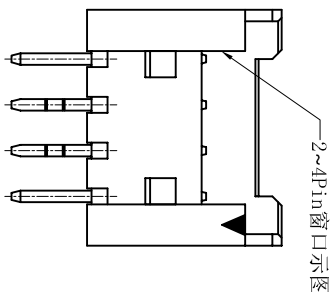
RoHS



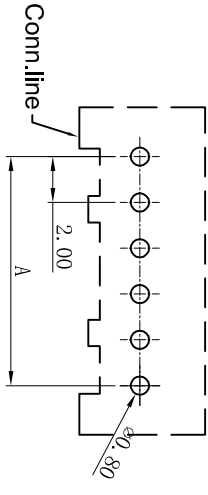
04P~20P Shape  
Scale 1:1



02P~03P Shape  
Scale 1:1



Detail A  
SCALE 2:1



Recommended P.C.B Layout  
General Tolerance±0.05

- SPECIFICATIONS**
- Voltage rating: 125V AC, DC
  - Current rating: 2A, AC, DC
  - Withstanding Voltage: 1000V AC/minute
  - Insulation resistance: 1000MΩ min
  - Temperature range: -25° C~+85° C
  - Contact resistance: 20mΩ max
- WAFER**
- Part No. : W2015VK-NP
  - Poles : 02-15P
  - Housing Material: Nylon 66+15%GF UL94V-0
  - Pin Material: Brass
  - Contact Area Plating: Tin-Plated
  - The Dimension Marked “▼” Must Be Recorded

With K to Choose the type(A Or B)

| Pin No     | 1 | 2 | 3 | 4 | 5 | 6 | N-2 | N-1 | N |
|------------|---|---|---|---|---|---|-----|-----|---|
| 6 PIN Over | - | A | B | - | - | - | B   | A   | - |
| 5 PIN      | A | B | - | B | A | - | -   | -   | - |
| 4 PIN      | A | B | B | A | - | - | -   | -   | - |
| 3 PIN      | A | B | A | - | - | - | -   | -   | - |
| 2 PIN      | A | B | - | - | - | - | -   | -   | - |

| Poles | Dimensions (mm) |       |       |
|-------|-----------------|-------|-------|
|       | A               | B     | C     |
| 02    | 2.00            | 7.70  | 5.30  |
| 03    | 4.00            | 9.70  | 7.30  |
| 04    | 6.00            | 10.30 | 9.30  |
| 05    | 8.00            | 12.30 | 11.30 |
| 06    | 10.00           | 14.30 | 13.30 |
| 07    | 12.10           | 16.40 | 15.50 |
| 08    | 14.10           | 18.40 | 17.50 |
| 09    | 16.20           | 20.50 | 19.60 |
| 10    | 18.20           | 22.50 | 21.60 |
| 11    | 20.20           | 24.60 | 23.60 |
| 12    | 22.20           | 26.60 | 25.70 |
| 13    | 24.20           | 28.70 | 27.70 |
| 14    | 26.20           | 30.70 | 29.70 |
| 15    | 28.30           | 32.80 | 31.60 |

**XYDZ® 东莞市祥运连接器有限公司**  
Dongguan Xiangyun Connector s CO., Ltd

|                   |  |            |              |   |  |                                    |  |   |  |
|-------------------|--|------------|--------------|---|--|------------------------------------|--|---|--|
| 修订版本              |  | 2015-11-04 | 陈雄军          | 一般公差<br>GENERAL TOLERANCE:<br>0±0.30<br>-0.00±0.25<br>.000±0.05<br>ANGLE: ±1° |  | 投影法<br>Projection<br>单位 Unit<br>MM |  | 品名<br>(PART NAME)<br>Molex2.00mm 35362 180°<br>Wafer Connector Series |  |
| 变更图宽格式内容          |  | 2013-12-27 | 陈雄军          | 绘图/DR<br>陈雄军  |  | 比例/Scale<br>1:1                    |  |   |  |
| 新版本               |  | 2011-05-24 | 陈雄军          | 审核/CHECK<br>胡进  |  | 大小/Size<br>A4                      |  | 料号<br>(PART NO)<br>W2015VK-NP   |  |
| 说明<br>DESCRIPTION |  | 日期<br>DATE | 承认<br>APPRO. | 日期/DATE<br>2013-09-12   |  | 页码/Sheet<br>1/1                    |  | 版本号<br>C  |  |
| 版次<br>REV.        |  | 1          | 2            | 3   |  | 4                                  |  | 5   |  |