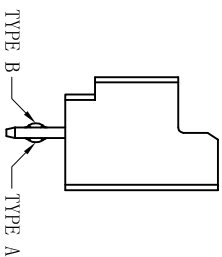
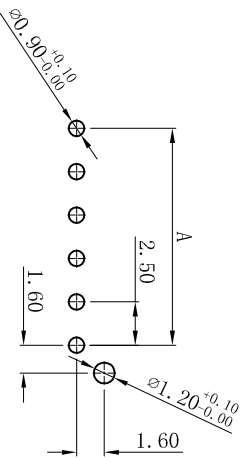
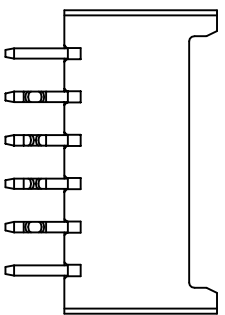
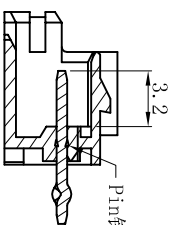
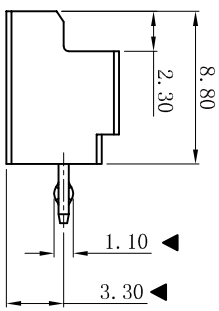
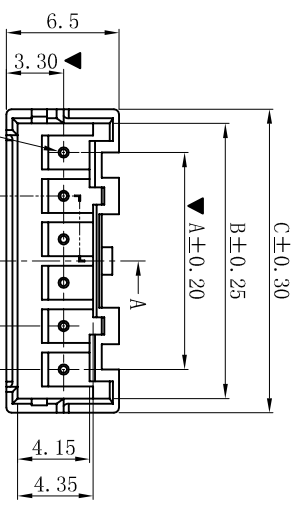
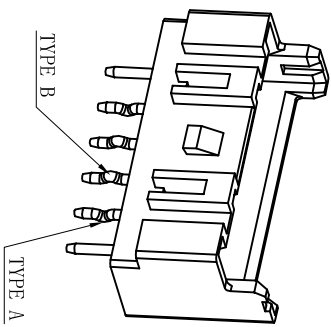
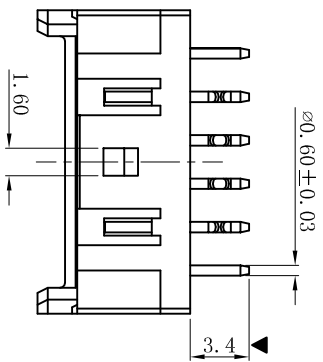


ROHS



- Specifications:
 - Voltage rating: 250V AC / DC
 - Current rating: 3A AC / DC
 - Withstanding voltage: 1000V AC/minute
 - Temperature range: -40°C~+105°C
 - Insulation resistance: ≥1000MΩ
 - Contact resistance: ≤10mΩ
 - After environmental testing: ≤20mΩ
- WAFER
 - Part No. : W2509V-NP-G
 - Poles : 02-15P
 - Housing Material: Nylon66 UL94V-0
 - Pin Material: Brass
 - Contact Area Plating: Gold-Plated
 - The Dimension Marked “▲” Must Be Recorded

打外K 对应PIN脚和方向(A或B)

Poles	Dimensions (mm)			Dimensions (mm)		
	A	B	C	A	B	C
02	2.50	5.85	7.50	09	20.00	23.35
03	5.00	8.35	10.00	10	22.50	25.85
04	7.50	10.85	12.50	11	25.00	28.35
05	10.00	13.35	15.00	12	27.50	30.85
06	12.50	15.85	17.50	13	30.00	33.35
07	15.00	18.35	20.00	14	32.50	35.85
08	17.50	20.85	22.50	15	35.00	38.35

Poles	Dimensions (mm)			Dimensions (mm)		
	A	B	C	A	B	C
02	2.50	5.85	7.50	09	20.00	23.35
03	5.00	8.35	10.00	10	22.50	25.85
04	7.50	10.85	12.50	11	25.00	28.35
05	10.00	13.35	15.00	12	27.50	30.85
06	12.50	15.85	17.50	13	30.00	33.35
07	15.00	18.35	20.00	14	32.50	35.85
08	17.50	20.85	22.50	15	35.00	38.35

XYDZ® 东莞市祥运连接器有限公司
Dongguan XiangYun Connectors CO., Ltd

一般公差
GENERAL TOLERANCE:
0±0.30
0.00±0.20
0.00±0.05
ANGLE: ±1°

绘图/DR
审核/CHECK
批准/APPRO
日期/DATE

投影法
Projection
单位 Unit
比例/Scale
大小/Size
页码/SHEET
版本/Rev

品名
(PART NAME)
料号
(PART NO)

更新图面
新版本
说明
DESCRIPTION

2019-06-03
2017-12-21
2019-12-20

陈雄军
胡进

MM
1:1
A4
1/2
B

XA 2.50mm 180° Wafer
Connector Series

W2509V-NP-G

状态码
C

JEFF
承认
APPRO.

2019-06-03
2017-12-21
2019-12-20

陈雄军
胡进

MM
1:1
A4
1/2
B

XA 2.50mm 180° Wafer
Connector Series

W2509V-NP-G

状态码
C

JEFF
承认
APPRO.

2019-06-03
2017-12-21
2019-12-20

陈雄军
胡进

MM
1:1
A4
1/2
B

XA 2.50mm 180° Wafer
Connector Series

W2509V-NP-G

状态码
C

JEFF
承认
APPRO.

2019-06-03
2017-12-21
2019-12-20

陈雄军
胡进

MM
1:1
A4
1/2
B

XA 2.50mm 180° Wafer
Connector Series

W2509V-NP-G

状态码
C

JEFF
承认
APPRO.

2019-06-03
2017-12-21
2019-12-20

陈雄军
胡进

MM
1:1
A4
1/2
B

XA 2.50mm 180° Wafer
Connector Series

W2509V-NP-G

状态码
C

JEFF
承认
APPRO.

2019-06-03
2017-12-21
2019-12-20

陈雄军
胡进

MM
1:1
A4
1/2
B

XA 2.50mm 180° Wafer
Connector Series

W2509V-NP-G

状态码
C

JEFF
承认
APPRO.

2019-06-03
2017-12-21
2019-12-20

陈雄军
胡进

MM
1:1
A4
1/2
B

XA 2.50mm 180° Wafer
Connector Series

W2509V-NP-G

状态码
C

JEFF
承认
APPRO.

2019-06-03
2017-12-21
2019-12-20

陈雄军
胡进

MM
1:1
A4
1/2
B

XA 2.50mm 180° Wafer
Connector Series

W2509V-NP-G

状态码
C

JEFF
承认
APPRO.

2019-06-03
2017-12-21
2019-12-20

陈雄军
胡进

MM
1:1
A4
1/2
B

XA 2.50mm 180° Wafer
Connector Series

W2509V-NP-G

状态码
C

JEFF
承认
APPRO.

2019-06-03
2017-12-21
2019-12-20

陈雄军
胡进

MM
1:1
A4
1/2
B

XA 2.50mm 180° Wafer
Connector Series

W2509V-NP-G

状态码
C

JEFF
承认
APPRO.

2019-06-03
2017-12-21
2019-12-20

陈雄军
胡进

MM
1:1
A4
1/2
B

XA 2.50mm 180° Wafer
Connector Series

W2509V-NP-G

状态码
C

JEFF
承认
APPRO.

2019-06-03
2017-12-21
2019-12-20

陈雄军
胡进

MM
1:1
A4
1/2
B

XA 2.50mm 180° Wafer
Connector Series

W2509V-NP-G

状态码
C

JEFF
承认
APPRO.

2019-06-03
2017-12-21
2019-12-20

陈雄军
胡进

MM
1:1
A4
1/2
B

XA 2.50mm 180° Wafer
Connector Series

W2509V-NP-G

状态码
C

JEFF
承认
APPRO.

2019-06-03
2017-12-21
2019-12-20

陈雄军
胡进

MM
1:1
A4
1/2
B

XA 2.50mm 180° Wafer
Connector Series

W2509V-NP-G

状态码
C

JEFF
承认
APPRO.

2019-06-03
2017-12-21
2019-12-20

陈雄军
胡进

MM
1:1
A4
1/2
B

XA 2.50mm 180° Wafer
Connector Series

W2509V-NP-G

状态码
C

JEFF
承认
APPRO.

2019-06-03
2017-12-21
2019-12-20

陈雄军
胡进

MM
1:1
A4
1/2
B

XA 2.50mm 180° Wafer
Connector Series

W2509V-NP-G

状态码
C

JEFF
承认
APPRO.

2019-06-03
2017-12-21
2019-12-20

陈雄军
胡进

MM
1:1
A4
1/2
B

XA 2.50mm 180° Wafer
Connector Series

W2509V-NP-G

状态码
C

JEFF
承认
APPRO.

2019-06-03
2017-12-21
2019-12-20

陈雄军
胡进

MM
1:1
A4
1/2
B

XA 2.50mm 180° Wafer
Connector Series

W2509V-NP-G

状态码
C

JEFF
承认
APPRO.

2019-06-03
2017-12-21
2019-12-20

陈雄军
胡进

MM
1:1
A4
1/2
B

XA 2.50mm 180° Wafer
Connector Series

W2509V-NP-G

状态码
C

JEFF
承认
APPRO.

2019-06-03
2017-12-21
2019-12-20

陈雄军
胡进

MM
1:1
A4
1/2
B

XA 2.50mm 180° Wafer
Connector Series

W2509V-NP-G

状态码
C

JEFF
承认
APPRO.

2019-06-03
2017-12-21
2019-12-20

陈雄军
胡进

MM
1:1
A4
1/2
B

XA 2.50mm 180° Wafer
Connector Series

W2509V-NP-G

状态码
C

JEFF
承认
APPRO.

2019-06-03
2017-12-21
2019-12-20

陈雄军
胡进

MM
1:1
A4
1/2
B

XA 2.50mm 180° Wafer
Connector Series

W2509V-NP-G

状态码
C

JEFF
承认
APPRO.

2019-06-03
2017-12-21
2019-12-20

陈雄军
胡进

MM
1:1
A4
1/2
B

XA 2.50mm 180° Wafer
Connector Series

W2509V-NP-G

状态码
C

JEFF
承认
APPRO.

2019-06-03
2017-12-21
2019-12-20

陈雄军
胡进

MM
1:1
A4
1/2
B

XA 2.50mm 180° Wafer
Connector Series

W2509V-NP-G

状态码
C

JEFF
承认
APPRO.

2019-06-03
2017-12-21
2019-12-20

陈雄军
胡进

MM
1:1
A4
1/2
B

XA 2.50mm 180° Wafer
Connector Series

W2509V-NP-G

状态码
C

JEFF
承认
APPRO.

2019-06-03
2017-12-21
2019-12-20

陈雄军
胡进

MM
1:1
A4
1/2
B

XA 2.50mm 180° Wafer
Connector Series

W2509V-NP-G

状态码
C

JEFF
承认
APPRO.

2019-06-03
2017-12-21
2019-12-20

陈雄军
胡进

MM
1:1
A4
1/2
B

XA 2.50mm 180° Wafer
Connector Series

W2509V-NP-G

状态码
C

JEFF
承认
APPRO.

2019-06-03
2017-12-21
2019-12-20