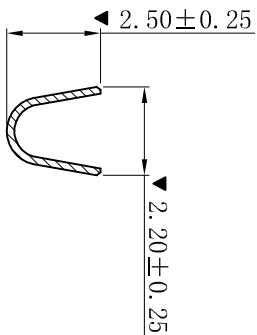
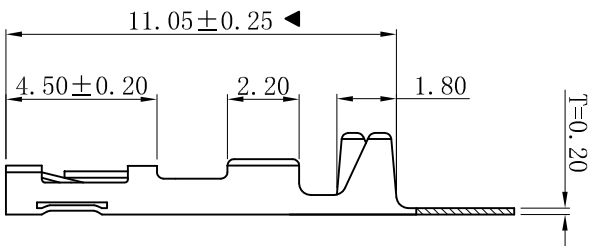
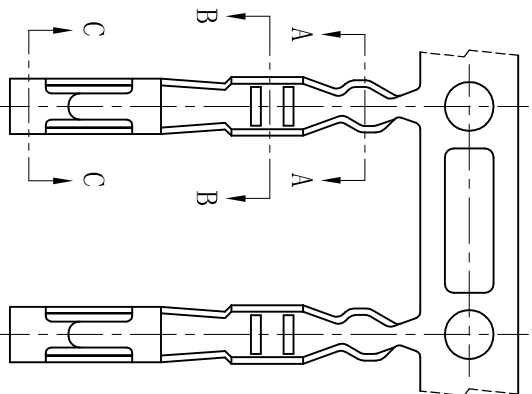
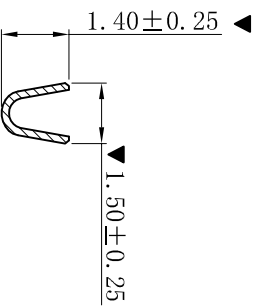


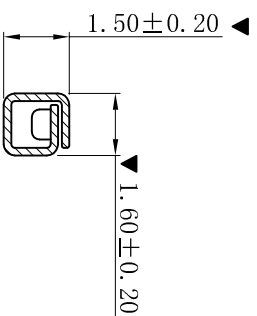
ROHS



SECTION: A-A



SECTION: B-B



SECTION: C-C

- SPECIFICATIONS
- Voltage rating: 250V AC, DC
- Current rating: 3A, AC, DC
- Withstanding Voltage: 1000V AC/minute
- Temperature range: -25°C~+85°C
- Contact resistance: 20mΩ max
- TERMINAL
- Part No.: T2544BT-SH
- Applicable wire: AWG#22-#26
- Material: Brass
- Finish: Tin-Plated
- The Dimension Marked “▼” Must Be Recorded

D	更新图面	2019-06-03	陈雄军
C	修订版本	2015-11-04	陈雄军
B	变更图宽格式内容	2013-12-27	陈雄军
A	新版本	2011-05-24	陈雄军
H	说明	日期	承认
1	版次	REV.	DESCRIPTION

一般公差	0±0.30
GENERAL TOLERANCE:	.00±0.25
	.000±0.05
ANGLE: ±1°	
绘图/DR	陈雄军
审核/CHECK	胡进
批准/APPRO	胡进
日期/DATE	2019-06-03

XYDZ® 东莞市祥运连接器有限公司 Dongguan XiangYun Connectors CO., Ltd		投影法 	品名 (PART NAME) 杜邦 2.54mm Female Terminal Connector Series
单位 Unit	MM	比例/Scale	1:1
大小/SIZE	A4	页码/SHEET	1/1
版本/Rev	D	料号 (PART NO)	T2544BT-SH
		状态码	C