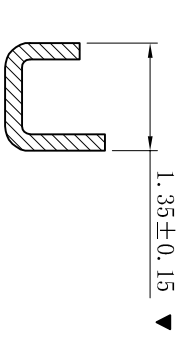
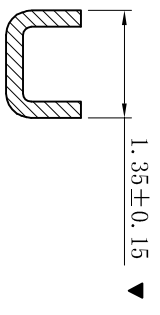
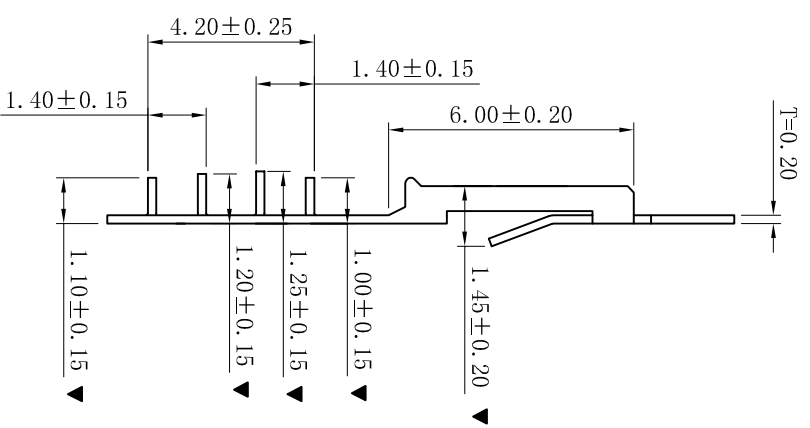
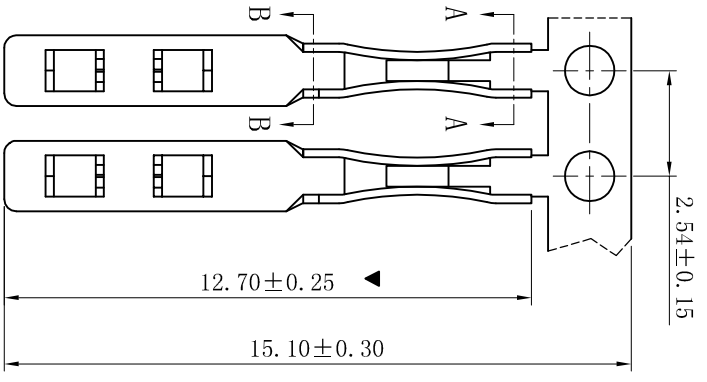


RoHS



- SPECIFICATIONS**
- Voltage rating: 250V AC, DC
  - Current rating: 3A, AC, DC
  - Withstanding Voltage: 1500V AC/minute
  - Temperature range: -25° C~+85° C
  - Contact resistance: 20mΩ max
- TERMINAL**
- Part No.: T2545HP-T
  - Applicable wire: AWG#22-#30
  - Material: Phosphor Bronze
  - Finish: Tin-Plated
  - The Dimension Marked “▼” Must Be Recorded

SECTION: A-A

SECTION: B-B

D	更新图面	2019-06-03	陈雄军	一般公差 GENERAL TOLERANCE: ANGLE: ±1°	0±0.30 .0±0.25 .00±0.20 .000±0.05
C	修订版本	2015-11-04	陈雄军	绘图/DR	陈雄军
B	变更图宽格式内容	2013-12-27	陈雄军	审核/CHECK	陈雄军
A	新版本	2011-05-24	陈雄军	批准/APPRO	胡进
H	版次 REV.	1	说明 DESCRIPTION	日期 DATE:	承认 APPRO.

**XYDZ® 东莞市祥运连接器有限公司**  
Dongguan XiangYun Connectors CO., Ltd

投影法  
Connector's  
单位 Unit  
比例/Scale  
大小/Size  
页码/Sheet  
版本/Rev

品名  
(PART NAME)  
料号  
(PART NO)状态码

Molex 2.54mm Terminal  
Connector Series  
T2545HP-T  
C