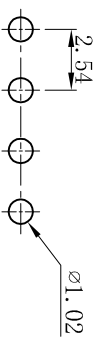
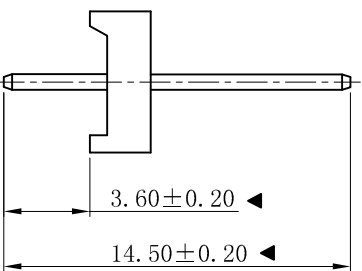
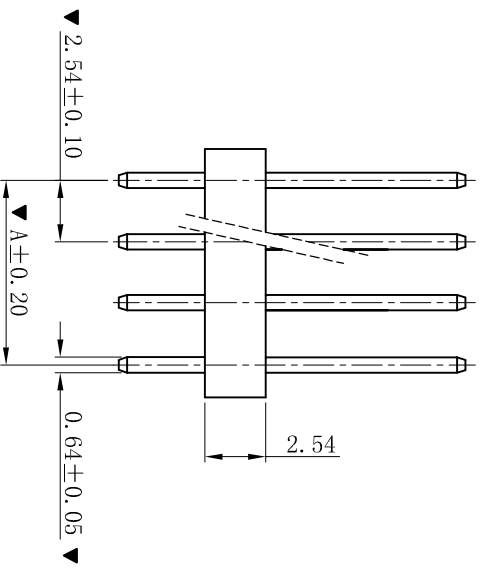
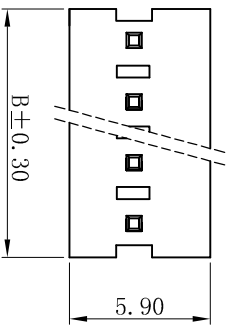


RoHS



P. C. B LAYOUT

- SPECIFICATIONS**
- Voltage rating: 250V AC, DC
 - Current rating: 3A, AC, DC
 - Withstanding Voltage: 800V AC/minute
 - Insulation resistance: 1000MΩ min
 - Temperature range: -25° C ~ +85° C
 - Contact resistance: 20mΩ max

- WAFER**
- Part No. : W2542DV-NP-B
 - Poles : 02-16P
 - Housing Material: PA66 UL94V-0
 - Pin Material: Brass
 - Contact Area Plating: Tin-Plated
 - The Dimension Marked “▼” Must Be Recorded

Poles	Dimension (mm)	
	A	B
02	2.54	5.08
03	5.08	7.62
04	7.62	10.16
05	10.16	12.70
06	12.70	15.24
07	15.24	17.78
08	17.78	20.32
09	20.32	22.86
10	22.86	25.40
11	25.40	27.94
12	27.94	30.48
13	30.48	33.02
14	33.02	35.56
15	35.56	38.10
16	38.10	40.64

D	更新图面	2019-06-03	陈雄军	一般公差 GENERAL TOLERANCE: 0±0.30 .0±0.25 .00±0.20 .000±0.05 ANGLE: ±1°	投影法 Projection MM	品名 (PART NAME)	2510 2.54mm 180° Wafer
C	修打版本	2015-11-04	陈雄军	绘图/DR 陈雄军	单位 Unit MM	料号 (PART NO)	W2542DV-NP-B
B	变更图宽格式内容	2013-12-27	陈雄军	审核/CHECK 陈雄军	比例/Scale 1:1		
A	新版本	2011-05-24	陈雄军	核准/APPRO 胡进	大小/Size A4		
H	版次 REV.	说明 DESCRIPTION	日期 DATE	承认 APPRO.	日期/DATE	页码/SHEET D	版本/Rev

XYDZ® 东莞市祥运连接器有限公司
Dongguan XiangYun Connectors CO., Ltd

1	2	3	4	5	6	7	8	9	10
---	---	---	---	---	---	---	---	---	----