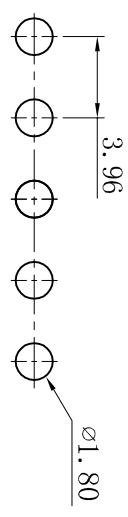
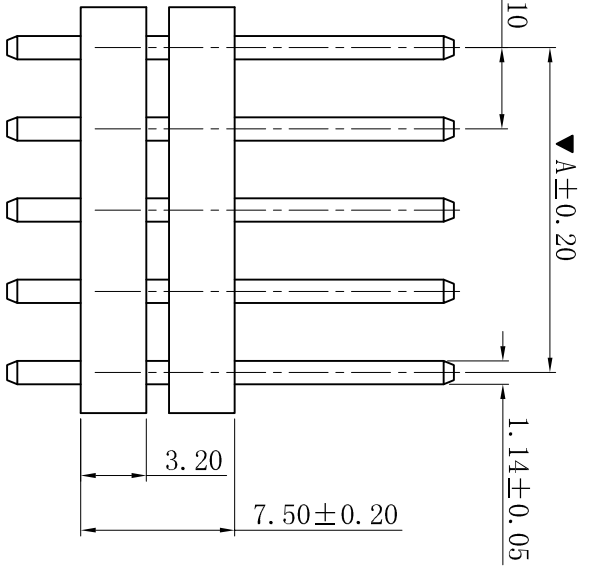
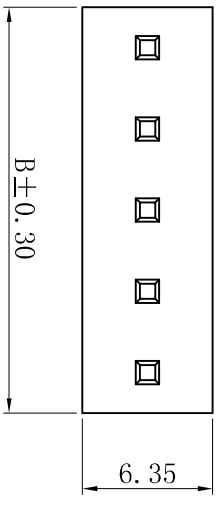
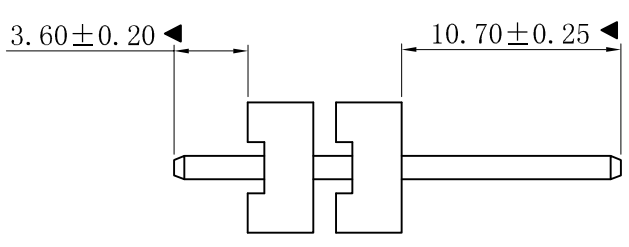


RoHS



P.C.B. LAYOUT



- SPECIFICATIONS**
- Voltage rating: 250V AC, DC
  - Current rating: 7A, AC, DC
  - Withstanding Voltage: 1500V AC/minute
  - Insulation resistance: 1000MΩ min
  - Temperature range: -25°C~+85°C
  - Contact resistance: 20mΩ max
- WAFER**
- Part No.: W3962WKB JV-NP-S10.7
  - Poles : 02-20P
  - Housing Material : PA66 UL94V-0
  - Pin Material : Brass
  - Contact Area Plating: Tin-Plated
  - The Dimension Marked “▼” Must Be Recorded

Poles	Dimensions (mm)	
	A	B
02	3.96	7.92
03	7.92	11.88
04	11.88	15.84
05	15.84	19.80
06	19.80	23.76
07	23.76	27.72
08	27.72	31.68
09	31.68	35.64
10	35.64	39.60
11	39.60	43.56
12	43.56	47.52
13	47.52	51.48
14	51.48	55.44
15	55.44	59.40
16	59.40	63.36
17	63.36	67.32
18	67.32	71.28
19	71.28	75.24
20	75.24	79.20

D	更新图面	2019-06-03	陈雄军	一般公差 GENERAL TOLERANCE: 0±0.30 .00±0.25 .000±0.05 ANGLE: ±1°	投影法 Projection 单位 Unit MM	品名 (PART NAME) Mollex 3.96mm 180° 无靠背 Wafer Connector Series	料号 (PART NO.) W3962WKB JV-NP-S10.7	状态码 C
C	修订版本	2015-11-04	陈雄军	绘图/DR 审核/CHECK 批准/APPRO	比例/Scale 大小/Size 页码/SHEET 版本/Rev			
B	变更图宽格式内容	2013-12-27	陈雄军	日期/DATE				
A	新版本	2011-05-24	陈雄军					
H	说明 DESCRIPTION		承认 APPRO.					
1	版次 REV.							

**XYDZ® 东莞市祥运连接器有限公司**  
Dongguan XiangYun Connectors CO., Ltd

1	2	3	4	5	6	7	8	9	10
---	---	---	---	---	---	---	---	---	----