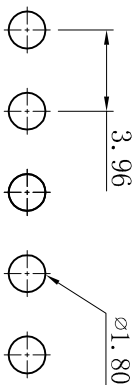
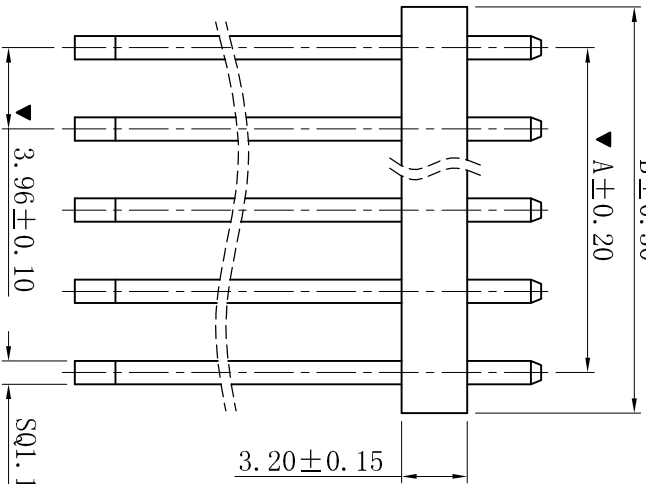
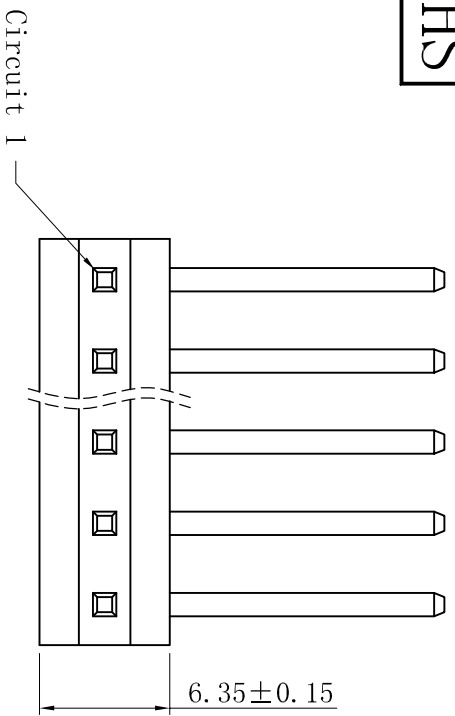
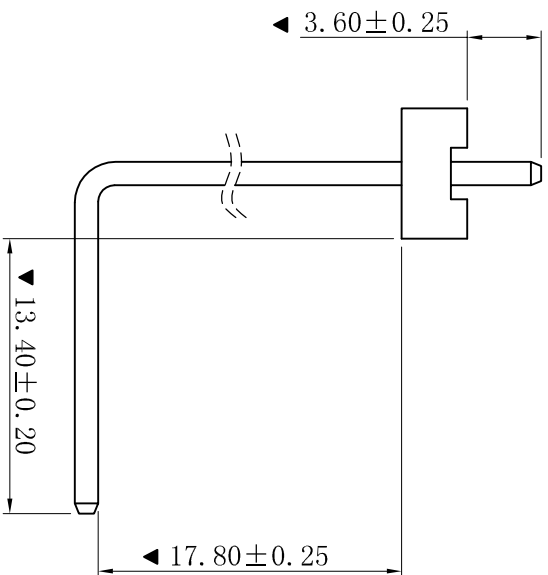


ROHS



P.C.B. LAYOUT



■ SPECIFICATIONS

- Voltage rating: 250V AC, DC
  - Current rating: 7A, AC, DC
  - Withstanding Voltage: 1500V AC/minute
  - Insulation resistance: 1000MΩ min
  - Temperature range: -25° C ~ +85° C
  - Contact resistance: 20mΩ max
- WAFER
- Part No.: W3962WKBRR-NP-S17.8-D3.6-V0
  - Poles : 02-24P
  - Housing Material: PA66 UL94V-0
  - Pin Material: Brass
  - Contact Area Plating: Tin-Plated
  - PIN L=1.14x41.0
  - The Dimension Marked "▼" Must Be Recorded

Poles	Dimensions (mm)	
	A	B
02	3.96	7.92
03	7.92	11.88
04	11.88	15.84
05	15.84	19.80
06	19.80	23.76
07	23.76	27.72
08	27.72	31.68
09	31.68	35.64
10	35.64	39.60
11	39.60	43.56
12	43.56	47.52
13	47.52	51.48
14	51.48	55.44
15	55.44	59.40
16	59.40	63.36
17	63.36	67.32
18	67.32	71.28
19	71.28	75.24
20	75.24	79.20
21	79.20	83.16
22	83.16	87.12
23	87.12	91.08
24	91.08	95.04

**XYDZ® 东莞市祥运连接器有限公司**  
Dongguan XiangYun Connectors CO., Ltd

一般公差  
GENERAL TOLERANCE:  
0±0.30  
.00±0.25  
.000±0.05  
ANGLE: ±1°

绘图/DR  
审核/CHECK  
批准/APPRO

投影法  
Projection  
单位 Unit  
MM

品名  
(PART NAME)  
Molex 3.96mm 90° 无靠背  
Wafer Connector Series

日期/DATE  
2019-06-25

陈雄军  
胡进

料号  
(PART NO)  
W3962WKBRR-NP-S17.8-D3.6-V0

说明  
DESCRIPTION  
新版本

日期/DATE  
2019-06-25

页码/SHEET  
版本/Rev  
A

状态码  
C

1 2 3 4 5 6 7 8 9 10