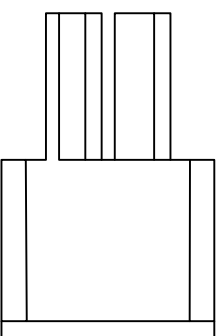
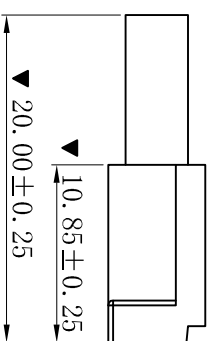
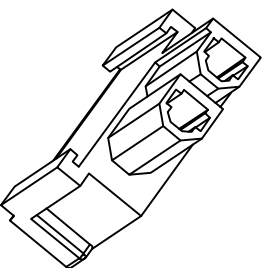
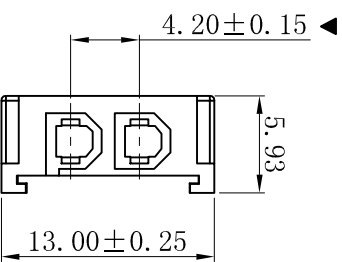
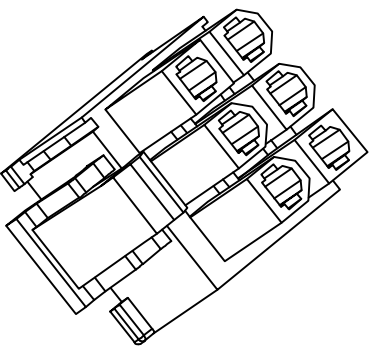
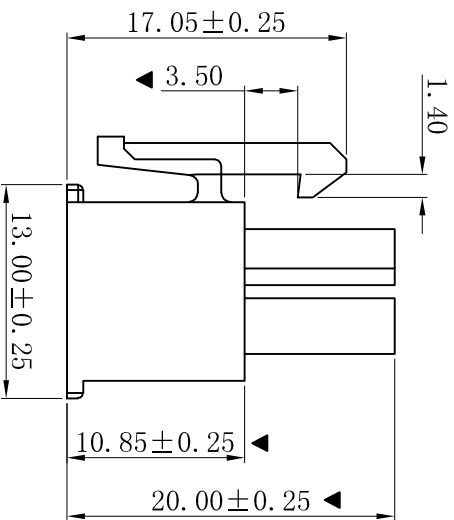
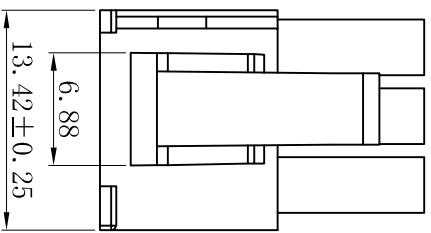
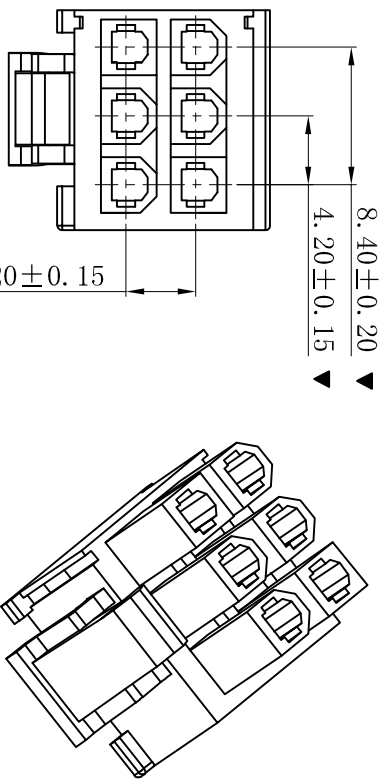


RoHS



■ SPECIFICATIONS

- Voltage rating: 600V AC, DC
- Current rating: 7A, AC, DC
- Withstanding Voltage: 1500V AC/minute
- Insulation resistance: 1000MΩ min
- Temperature range: -25° C~+85° C

■ HOUSING

- Part No.: H4201H-6+2-BK-ZL
- Poles: 08P
- Housing Material: PA66 UL94V-2 Black
- Use With: T4202 Terminal
- The Dimension Marked “▼” Must Be Recorded

一般公差 GENERAL TOLERANCE:	0±0.30 .0±0.25 .000±0.05
绘图/DR	陈雄军
审核/CHECK	胡进
批准/APPRO	胡进
日期/DATE	2019-07-30

XYDZ® 东莞市祥运连接器有限公司
Dongguan XiangYun Connectors CO., Ltd

品名 (PART NAME) Molex 4.20mm 6+2滑轨组合式
Male Housing Connector Series

料号 (PART NO) H4201H-6+2-BK-ZL

版本号 REV.	说明 DESCRIPTION	日期 DATE	承认 APPRO.
A	新版本	2019-07-30	陈雄军
1			
2			
3			
4			
5			
6			
7			
8			
9			
10			

投影法 Projection	单位 Unit	比例/Scale	大小/Size	页码/Sheet	版本/Rev
第一角	MM	1:1	A4	1/1	A
料号 (PART NO)					状态码
H4201H-6+2-BK-ZL					C