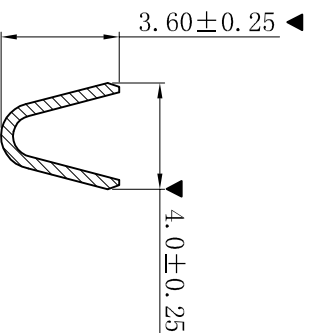
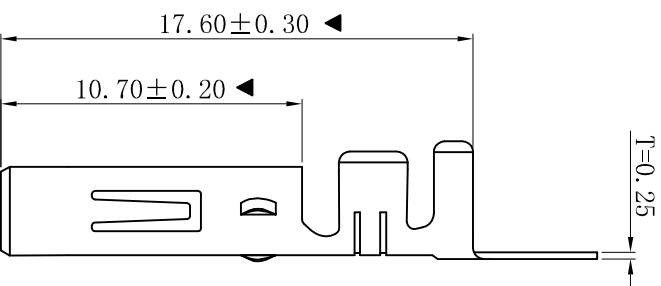
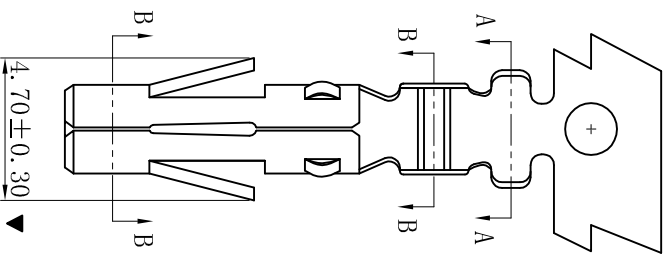
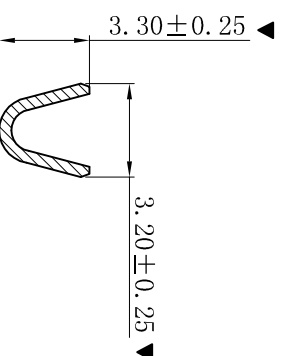


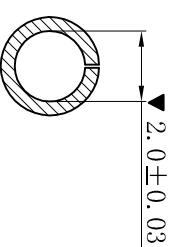
ROHS



SECTION: A-A



SECTION: B-B



SECTION: C-C

- SPECIFICATIONS
- Voltage rating: 250V AC, DC
 - Current rating: 5A, AC, DC
 - Withstanding Voltage: 1500V AC/minute
 - Temperature range: -25° C~+85° C
 - Contact resistance: 20mΩ max

■ TERMINAL

- Part No.: T5082BT-GJ-D
- Applicable wire: AWG#16-#18
- Material: Brass
- Finish: Tin-Plated
- The Dimension Marked “▼” Must Be Recorded

G

D	更新图面	2019-06-03	陈雄军
C	修打版本	2015-11-04	陈雄军
B	变更图宽格式内容	2013-12-27	陈雄军
A	新版本	2011-05-24	陈雄军

1	说明	日期	承认
2	DESCRPTION	DATE:	APPRO.

一般公差 GENERAL TOLERANCE: 0±0.30 .0±0.25 .00±0.20 .000±0.05 ANGLE: ±1°		绘图/DR 审核/CHECK 批准/APPRO 日期/DATE	
Projection 单位 Unit 比例/Scale 大小/Size 页码/SHEET 版本/Rev		陈雄军 陈雄军 胡进 2019-06-03	

G

XYDZ® 东莞市祥运连接器有限公司
 Dongguan XiangYun Connectors CO., Ltd

H

品名 (PART NAME)	Molex 5.08mm Female Terminal Connector Series
料号 (PART NO)	T5082BT-GJ-D
状态码	C

H

H

1

2

3

4

5

6

7

8

9

10