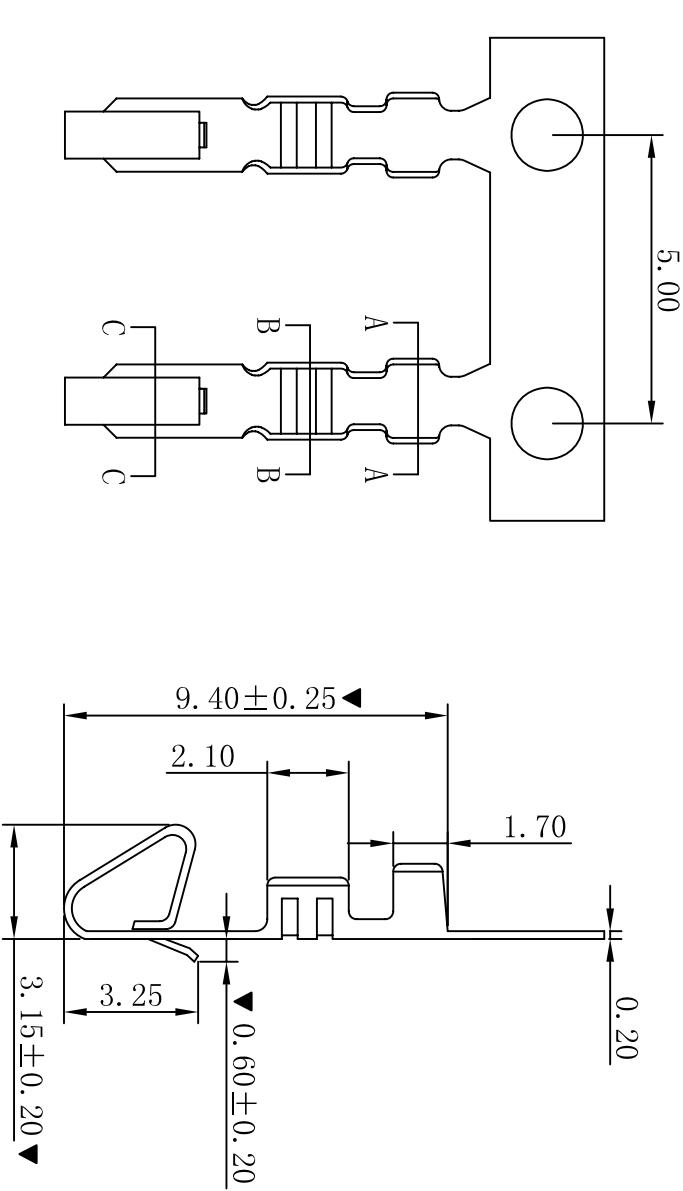


RoHS



■ SPECIFICATIONS

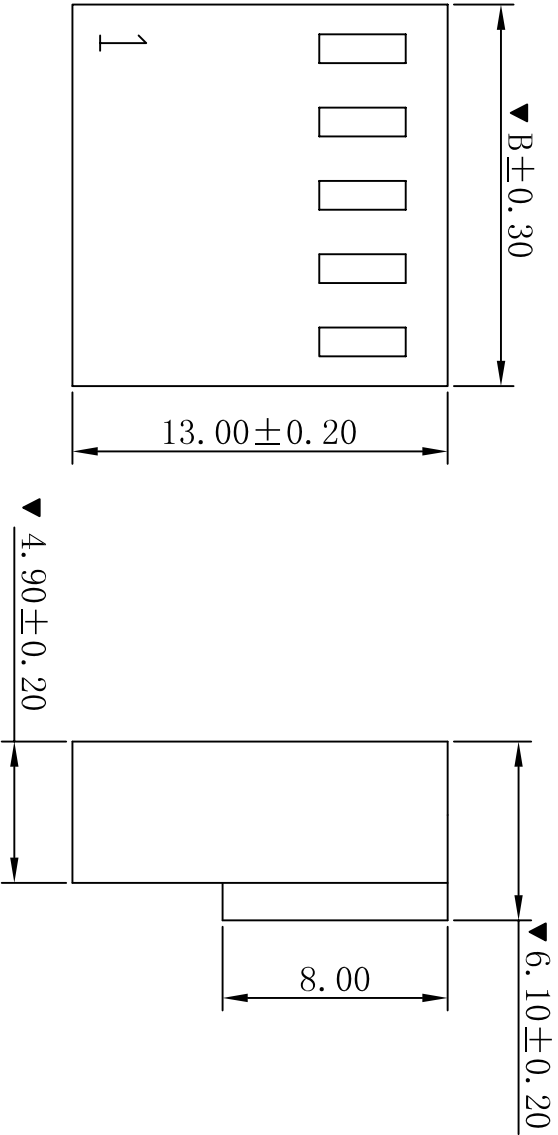
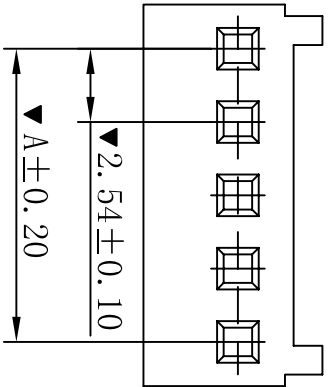
- Voltage rating: 250V AC, DC
- Current rating: 3A, AC, DC
- Withstanding Voltage: 1000V AC/minute
- Insulation resistance: 1000MΩ min
- Temperature range: -25° C~+85° C
- Contact resistance: 20mΩ max

■ TERMINAL

- Part No. : T2542BT(S)
- Applicable wire: AWG#20-#30
- Material: Brass
- Finish: Tin Plated
- The Dimension Marked "▼" Must Be Recorded

G		修订版本		2015-11-04		陈雄军		一般公差 GENERAL TOLERANCE:		0 ± 0.30 .0 ± 0.25 .000 ± 0.05		投影法 Projection		XYDZ® 东莞市祥运连接器有限公司 Connectors Dongguan XiangYun Connectors CO., Ltd	
C		变更图章格式内容		2013-12-27		陈雄军		ANGLE: ±1°		0.65		单位 Unit		品名 (PART NAME)	
B		新版本		2011-05-24		陈雄军		0.20		2.00 ± 0.20		MM		2510 2.54mm Terminal Connector Series	
A		说明 DESCRIPTION		日期 DATE		承认 APPRO.		0.65		1.25 ± 0.10		MR. feng		料号 (PART NO)	
H		版次 REV.		1		1		3.15 ± 0.20		2.00 ± 0.20		日期/DATE		T2542BT(S)	
1		2		3		4		5		6		7		8	
9		10		1		2		3		4		5		6	

RoHS



■ SPECIFICATIONS

- Voltage rating: 250V AC, DC
- Current rating: 3A, AC, DC
- Withstanding Voltage: 1000V AC/minute
- Insulation resistance: 1000MΩ min
- Temperature range: -25° C~+85° C
- Contact resistance: 20mΩ max

■ HOUSING

- Part No. : H2542-NP
- Poles : 02-20P
- Housing Material: Nylon66 UL94V-2
- The Dimension Marked “▼” Must Be Recorded

PART NO.	Dimensions (mm)	
	A	B
02	2.54	5.68
03	5.08	8.22
04	7.62	10.76
05	10.16	13.30
06	12.70	15.84
07	15.24	18.38
08	17.78	20.92
09	20.32	23.46
10	22.86	26.00
11	25.40	28.54
12	27.94	31.08
13	30.48	33.62
14	33.02	36.62
15	35.56	38.70
16	38.10	41.24
17	40.64	43.78
18	43.18	46.32
19	45.72	48.86
20	48.26	51.40

一般公差 GENERAL TOLERANCE:	0±0.30 .0±0.25 .00±0.20 .000±0.05
ANGLE: ±1°	

投影法 Projection	
单位 Unit	MM
比例/Scale	1:1
大小/SIZE	A4
页码/SHEET	1/1
版本/Rev	C

**XYDZ® 东莞市祥运连接器有限公司**  
Dongguan XiangYun Connectors CO., Ltd

品名 (PART NAME) 2510 2.54mm Housing  
Connector Series

料号 (PART NO) H2542-NP

修订版本	2015-11-04	陈雄军
变更图章格式内容	2013-12-27	陈雄军
新版本	2011-05-24	陈雄军
说明	日期	承认
DESCRIPTION	DATE	APPRO.

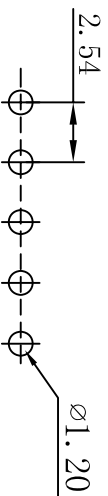
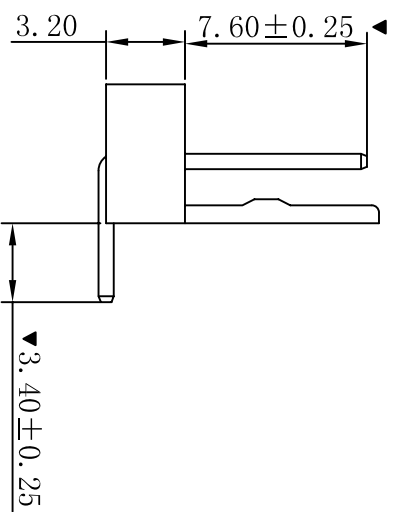
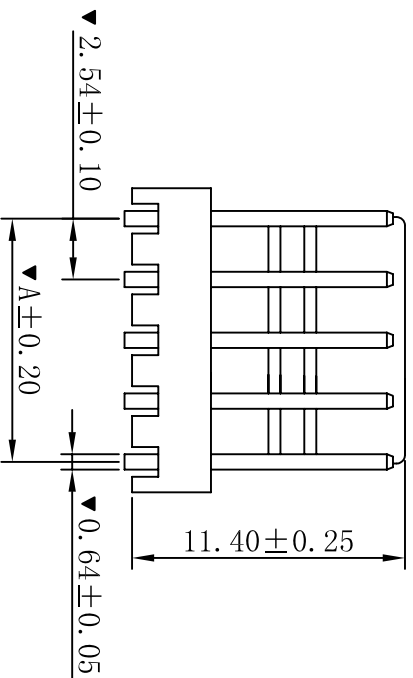
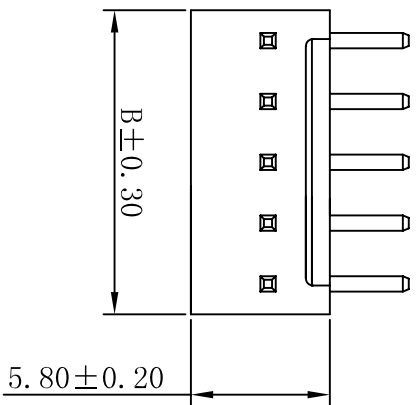
绘图/DR	陈雄军
审核/CHECK	胡进
批准/APPRO	MR. feng
日期/DATE	2015-11-04

公差	0±0.30
角度	±1°

品名 (PART NAME)	2510 2.54mm Housing
料号 (PART NO)	H2542-NP

1 2 3 4 5 6 7 8 9 10

RoHS



P. C. B LAYOUT

- SPECIFICATIONS
- Voltage rating: 250V AC, DC
  - Current rating: 3A, AC, DC
  - Withstanding Voltage: 800V AC/minute
  - Insulation resistance: 1000MΩ min
  - Temperature range: -25° C ~ +85° C
  - Contact resistance: 20mΩ max
- EWAFFER
- Part No. : W2542R-NP
  - Poles : 02-20P
  - Housing Material: Nylon66 UL94V-0
  - Pin Material: Brass
  - Contact Area Plating: Tin-Plated
  - The Dimension Marked “▼” Must Be Recorded

Part No.	Dimension (mm)	
	A	B
02	2.54	5.08
03	5.08	7.62
04	7.62	10.16
05	10.16	12.70
06	12.70	15.24
07	15.24	17.78
08	17.78	20.32
09	20.32	22.86
10	22.86	25.40
11	25.40	27.94
12	27.94	30.48
13	30.48	33.02
14	33.02	35.56
15	35.56	38.10
16	38.10	40.64
17	40.64	43.18
18	43.18	45.72
19	45.72	48.26
20	48.26	50.80

**XYDZ® 东莞市祥运连接器有限公司**  
 Dongguan XiangYun Connectors CO., Ltd

一般公差 GENERAL TOLERANCE:	0±0.30 .0±0.25 .00±0.20 .000±0.05
绘图/DR	陈雄军
审核/CHECK	胡进
日期/DATE	2015-12-04

投影法  
Projection



单位 Unit  
MM

比例/Scale  
1:1

大小/SIZE  
A4

页码/SHEET  
1/1

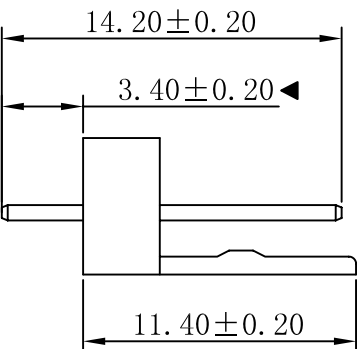
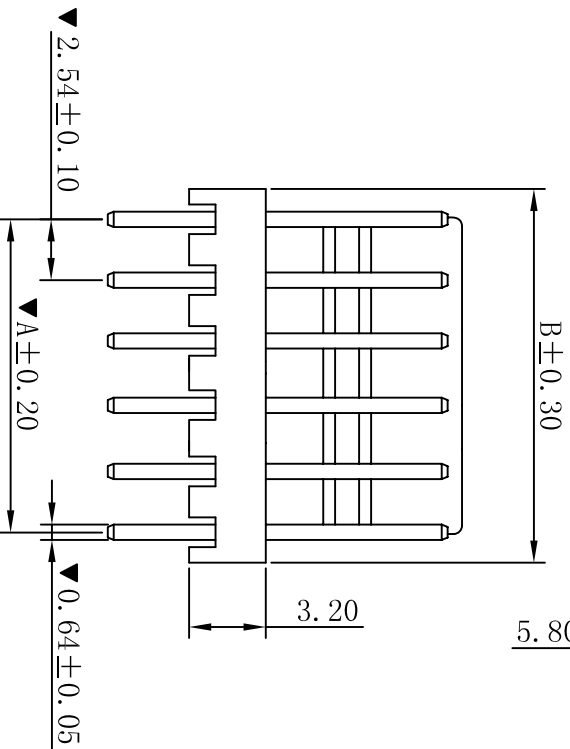
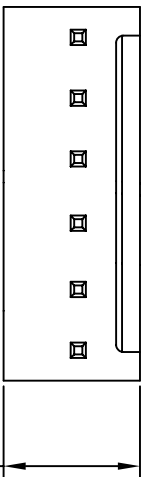
品名 (PART NAME)  
2510 2.54mm 90° Wafer  
Connector Series

料号 (PART NO)  
W2542R-NP

修订版本	2015-11-04	陈雄军
变更图章格式内容	2013-12-27	陈雄军
新版本	2011-05-24	陈雄军
说明	日期	承认
DESCRIPTION	DATE	APPRO.

版次 REV.	1	2	3	4	5	6	7	8	9	10
---------	---	---	---	---	---	---	---	---	---	----

ROHS



P. C. B LAYOUT

- SPECIFICATIONS**
- Voltage rating: 250V AC, DC
  - Current rating: 3A, AC, DC
  - Withstanding Voltage: 800V AC/minute
  - Insulation resistance: 1000M $\Omega$  min
  - Temperature range: -25 $^{\circ}$ C ~ +85 $^{\circ}$ C
  - Contact resistance: 20m $\Omega$  max
- EWAFFER**
- Part No. : W2542V-NP
  - Poles : 02-20P
  - Housing Material: Nylon66 UL94V-0
  - Pin Material: Brass
  - Contact Area Plating: Tin-Plated
  - The Dimension Marked "▼" Must Be Recorded

Part No.	Dimension (mm)	
	A	B
02	2.54	5.08
03	5.08	7.62
04	7.62	10.16
05	10.16	12.70
06	12.70	15.24
07	15.24	17.78
08	17.78	20.32
09	20.32	22.86
10	22.86	25.40
11	25.40	27.94
12	27.94	30.48
13	30.48	33.02
14	33.02	35.56
15	35.56	38.10
16	38.10	40.64
17	40.64	43.18
18	43.18	45.72
19	45.72	48.26
20	48.26	50.80

一般公差 GENERAL TOLERANCE:		0±0.30 .0±0.25 .00±0.20 .000±0.05
ANGLE: ±1 $^{\circ}$		
修订版本	2015-11-04	陈雄军
变更图章格式内容	2013-12-27	陈雄军
新版本	2011-05-24	陈雄军
说明	日期	承认
DESCRIPTION	DATE:	APPRO.

XYDZ <sup>®</sup> 东莞市祥运连接器有限公司 Connectors Dongguan XiangYun Connectors CO., Ltd		投影法 Projection	第一角画法 MM
品名 (PART NAME)	2510 2.54mm 180 $^{\circ}$ Wafer Connector Series	单位 Unit	MM
料号 (PART NO)	W2542V-NP	比例/Scale	1:1
		大小/SIZE	A4
		页码/SHEET	1/1
		版本/rev	C