

- SPECIFICATIONS
 - Voltage rating: 250V AC, DC
 - Current rating: 8A, AC, DC
 - Withstanding Voltage: 1500V AC/minute
 - Insulation resistance: 1000MΩ min
 - Temperature range: -40° C~+105° C
 - HOUSING
 - Part No. : H2520-1xNP-X
 - Poles : 02-08P
 - Housing Material: PA4T UL94V-0
- The Dimension Marked “▼” Must Be Recorded

Part No. : H2520-1xNP-X

A: Key A Black
B: Key B Natural

Poles	Dimensions (mm)		Color
	A	B	
02	7.70	2.50	Black (Key A)
03	10.20	5.00	
04	12.70	7.50	
05	15.20	10.00	
06	17.70	12.50	
07	20.20	15.00	
08	22.70	17.50	
02	7.70	2.50	
03	10.20	5.00	
04	12.70	7.50	
05	15.20	10.00	
06	17.70	12.50	
07	20.20	15.00	
08	22.70	17.50	

XYDZ® 东莞市祥运连接器有限公司
Dongguan XiangYun Connectors Co., Ltd

一般公差
GENERAL TOLERANCE:
±0.30
.00±0.25
.00±0.20
ANGLE: ±1°

绘图/DR
审核/CHECK
批准/APPRO
日期/DATE

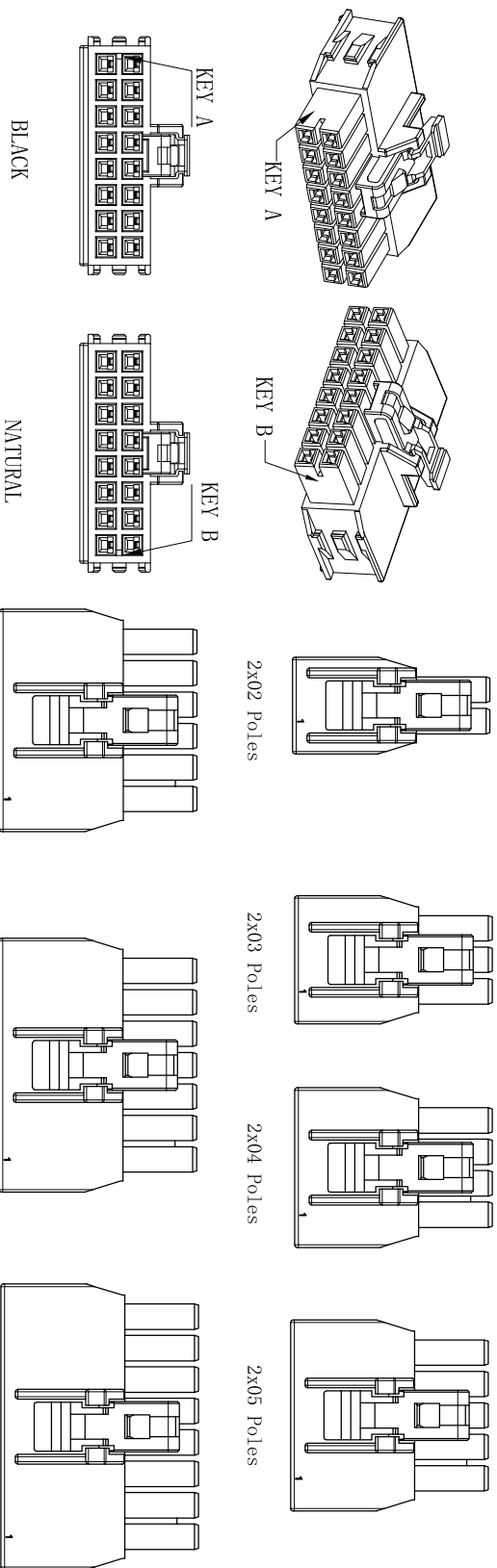
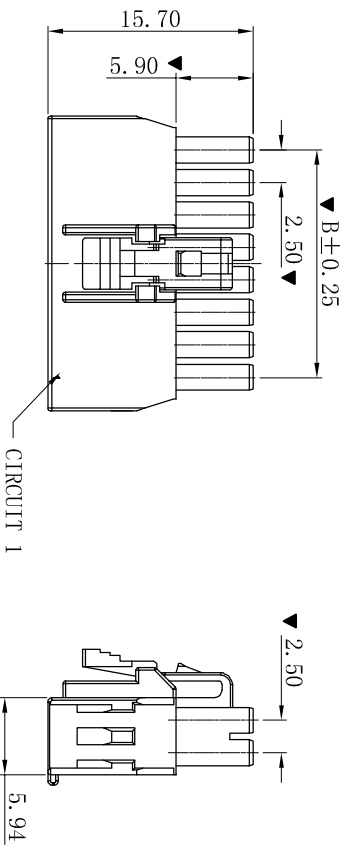
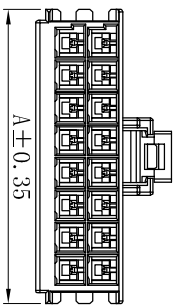
投影法
单位 Unit
比例/Scale
大小/SIZE
页码/SHEET
版本/Rev

品名
(PART NAME)
料号
(PART NO)
状态码

版次 REV.	说明 DESCRIPTION	日期 DATE	承认 APPRO.
A	新版本	2022-10-19	胡进

Molex 2.50mm Male Housing
Connector Series
H2520-1xNP-X

ROHS



■ SPECIFICATIONS

- Voltage rating: 250V AC, DC
- Current rating: 8A, AC, DC
- Withstanding Voltage: 1500V AC/minute
- Insulation resistance: 1000MΩ min
- Temperature range: -40° C~+105° C

■ HOUSING

- Part No. : H2520-2xNP-X
- Poles : 02-08P
- Housing Material: PA4T UL94V-0

● The Dimension Marked “▼” Must Be Recorded

Part No. : H2520-2xNP-X

A: Key A Black
B: Key B Natural

Poles	Dimensions (mm)		Color
	A	B	
04	7.70	2.50	Black (Key A)
06	10.20	5.00	
08	12.70	7.50	
10	15.20	10.00	
12	17.70	12.50	
14	20.20	15.00	
16	22.70	17.50	
16	22.70	17.50	

一般公差 GENERAL TOLERANCE:	0±0.30 .00±0.25 .000±0.05
角度: ±1°	ANGLE: ±1°

投影法 Projection	第一角投影
单位 Unit	MM
比例/Scale	1:1
大小/Size	A4
页码/Sheet	1/1
版本/Rev	A

XYDZ® 东莞市祥运连接器有限公司
Dongguan XiangYun Connectors Co., Ltd

品名 (PART NAME): Molex 2.50mm Male Housing Connector Series

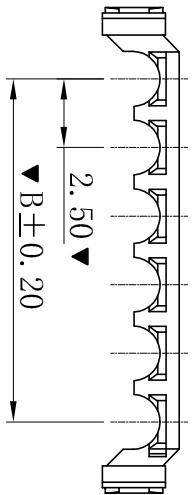
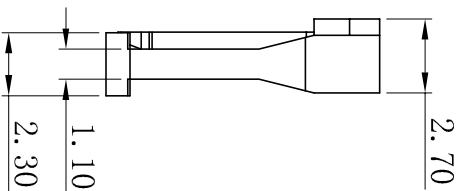
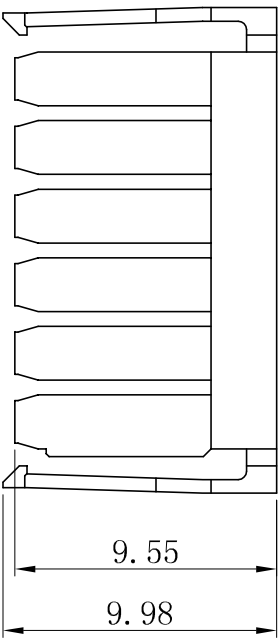
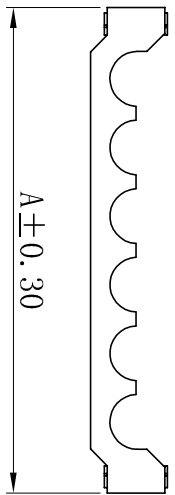
料号 (PART NO): H2520-2xNP-X

版次 REV.	1	说明 DESCRIPTION	新版本	日期 DATE.	2022-10-19	承认 APPRO.	胡进
------------	---	-------------------	-----	-------------	------------	--------------	----

1 2 3 4 5 6 7 8 9 10

RoHS

- HOUSING
- Part No. : H2520TS-NP
- Poles : 02-08P
- Housing Material : PA4T UL94V-0
- The Dimension Marked “▼” Must Be Recorded



Poles	Dimensions (mm)	
	A	B
02	7.70	2.50
03	10.20	5.00
04	12.70	7.50
05	15.20	10.00
06	17.70	12.50
07	20.20	15.00
08	22.70	17.50

XYDZ® 东莞市祥运连接器有限公司
 Dongguan XiangYun Connectors CO., Ltd

一般公差 GENERAL TOLERANCE:	0±0.30 .00±0.25 .000±0.20
ANGLE: ±1°	

投影法 Projection	第一角投影法 First Angle Projection
单位 Unit	MM
比例/Scale	1:1
大小/Size	A4
页码/SHEET	1/1
版本/Rev	A

品名 (PART NAME): Molex 2.50mm Housing TPA Connector Series

料号 (PART NO): H2520TS-NP

绘图/DR	陈雄军
审核/CHECK	胡进
批准/APPRO	
日期/DATE	2022-10-19

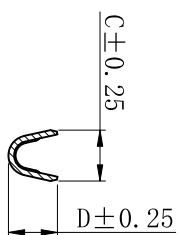
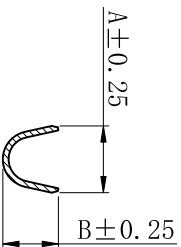
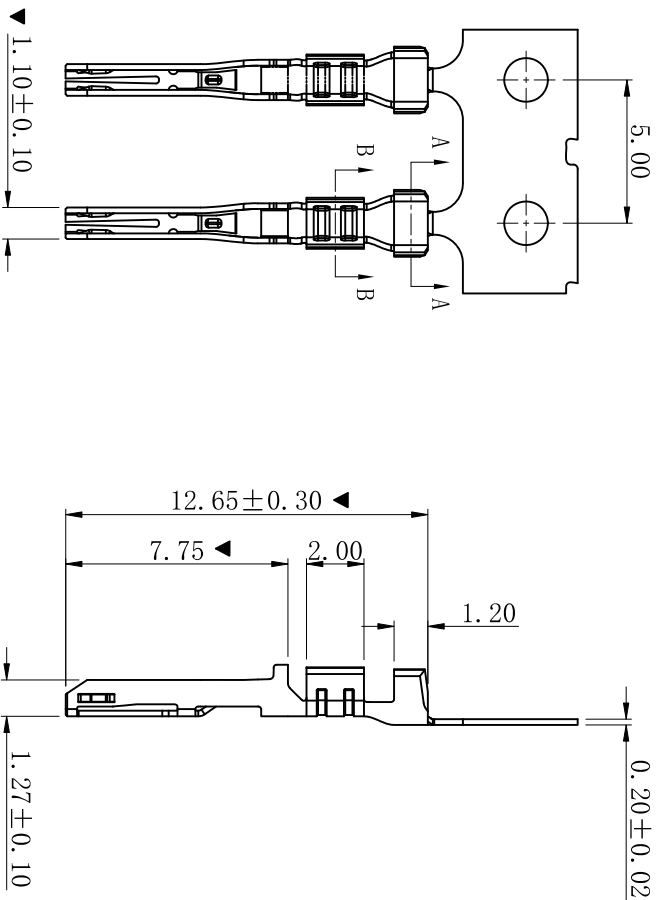
日期 DATE:	2022-10-19
承认 APPRO.	陈雄军

新版本
 说明
 DESCRIPTION

版次 REV.	A
1	
2	
3	
4	
5	
6	
7	
8	
9	
10	

A B C D E F G H

ROHS



SECTION: A-A

SECTION: B-B

Part No.	Wire Range	Dim. A	Dim. B	Dim. C	Dim. D
T2520GDDT-DJ	#24~#26	2.13	2.00	1.39	1.45
T2520GDDT-GJ	#20~#22	2.33	1.93	1.96	2.14

Part No.	Wire Range	Dim. A	Dim. B	Dim. C	Dim. D
T2520GDDT-DJ	#24~#26	2.13	2.00	1.39	1.45
T2520GDDT-GJ	#20~#22	2.33	1.93	1.96	2.14

■ SPECIFICATIONS

- Voltage rating: 250V AC, DC
- Current rating: 8A, AC, DC
- Withstanding Voltage: 1500V AC/minute
- Temperature range: -40°C~+105°C
- Contact resistance: 30mΩ max

■ TERMINAL

- Part No.: T2520GDDT-X
- Applicable wire: AWG#20-#26
- Material: High Conductivity Copper Alloy
- Finish: Tin-Plated
- The Dimension Marked “▼” Must Be Recorded

Part No.: T2520GDDT-X

▼DJ: #24~#26
▼GJ: #22~#20

Part No.	Wire Range	Dim. A	Dim. B	Dim. C	Dim. D
T2520GDDT-DJ	#24~#26	2.13	2.00	1.39	1.45
T2520GDDT-GJ	#20~#22	2.33	1.93	1.96	2.14

Part No.	Wire Range	Dim. A	Dim. B	Dim. C	Dim. D
T2520GDDT-DJ	#24~#26	2.13	2.00	1.39	1.45
T2520GDDT-GJ	#20~#22	2.33	1.93	1.96	2.14

<p>XYDZ® 东莞市祥运连接器有限公司 Dongguan Xiangyun Connectors CO., Ltd</p>		<p>投影法 Connectors</p>		<p>品名 (PART NAME) Molex 2.50mm Female Terminal Connector Series</p>	
<p>一般公差 GENERAL TOLERANCE: 0±0.30 .00±0.25 .000±0.05 ANGLE: ±1°</p>		<p>绘图/DR 审核/CHECK 批准/APPRO 日期/DATE</p>		<p>单位 Unit 比例/Scale 大小/SIZE 页码/SHEET 版本/Rev</p>	
<p>2022-10-19</p>		<p>胡进</p>		<p>料号 (PART NO) T2520GDDT-X</p>	
<p>2022-10-19</p>		<p>胡进</p>		<p>状态码 C</p>	

Part No.	Wire Range	Dim. A	Dim. B	Dim. C	Dim. D
T2520GDDT-DJ	#24~#26	2.13	2.00	1.39	1.45
T2520GDDT-GJ	#20~#22	2.33	1.93	1.96	2.14